

# NEW PRODUCT INFORMATION

## SpaceMeasure

Non-contact mobile system  
for large 3D objects  
measurement



**NEW-STYLE**  
Coordinate Measuring Machines

### F eatures

- › Frameless CMM, by 3 CCD camera and infrared led
- › Suitable for contact and non-contact measurement
- › Wide range of application by a large measurement volume
- › Mobile system, brings the quality to your parts



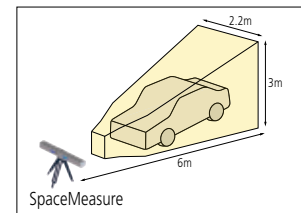
**Mitutoyo**

# SpaceMeasure



SPM Probe: Tactile probe for contact measurement.

SPM Surface: Surface Measure M, line laser probe for point cloud measurement.



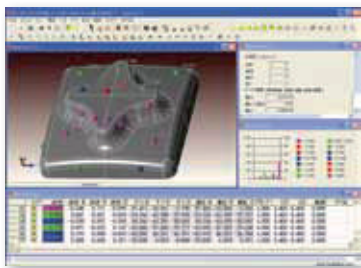
## Specifications

Model	4000	5000	6000	6000H	
Working range from camera	1.5 ~ 4 m	1.5 ~ 5 m	1.5 ~ 6 m		
Measurement area (volume)	6 m <sup>3</sup>	11 m <sup>3</sup>	17 m <sup>3</sup>		
Resolution	2 μm		2 μm		
Accuracy	Single point	60 μm		40 μm	
	Volume	Zone I (1.5 ~ 3.5 m)	90 μm + 10 μm/m		60 μm + 10 μm/m
		Zone II (3.5 ~ 5 m)	90 μm + 25 μm/m		70 μm + 25 μm/m
		Zone III (5 ~ 6 m)	-	-	190 μm + 25 μm/m
Operation temperature	15 - 35 °C		15 - 40 °C		

## Software

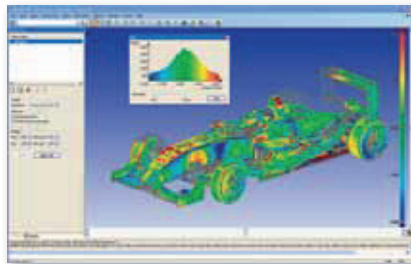
### MCOSMOS

- tactile probe



### MSURF-M

- tactile probe
- Surface Measure M



- Coordinate Measuring Machines
- Vision Measuring Systems
- Form Measurement
- Optical Measuring
- Sensor Systems
- Test Equipment and Seismometers
- Digital Scale and DRO Systems
- Small Tool Instruments and Data Management

Mitutoyo Nederland b.v.  
 Storkstraat 40  
 3905 KX Veenendaal  
 T 0031 318 534911  
 F 0031 318 534811  
 sales@mitutoyo.nl  
 www.mitutoyo.nl

**Note:** All information about our products in this printed material, particularly the illustrations, drawings, measurement and performance specifications, as well as other technical specifications, are to be interpreted as approximate average values. In this respect, changes in construction, technical specification, measures and weights remain reserved. Our specified standards, similar technical regulations as well as the technical specifications, descriptions and illustrations of products are accurate on the date of printing. Furthermore, our general terms of business in the currently applicable revision are binding. Only the offers we make are definitive.

# Mitutoyo